

# **Locations: Initial trail concept**

## Visitors Centre Area

Distance from Golden centre: **2.4 km**

Walking time: **34 minutes**

Drive time: **4 minutes**

### Benefits

- Informal, unmanaged trails exist
- Potential parking
- Visitor Centre proximity

### Constraints

- Steep terrain
- Close to highway traffic and pollution
- High noise levels
- Distance from town





## North Trail - Kicking Horse Bridge

Distance from Golden centre: **3.3 km**

Walking time: **40 minutes**

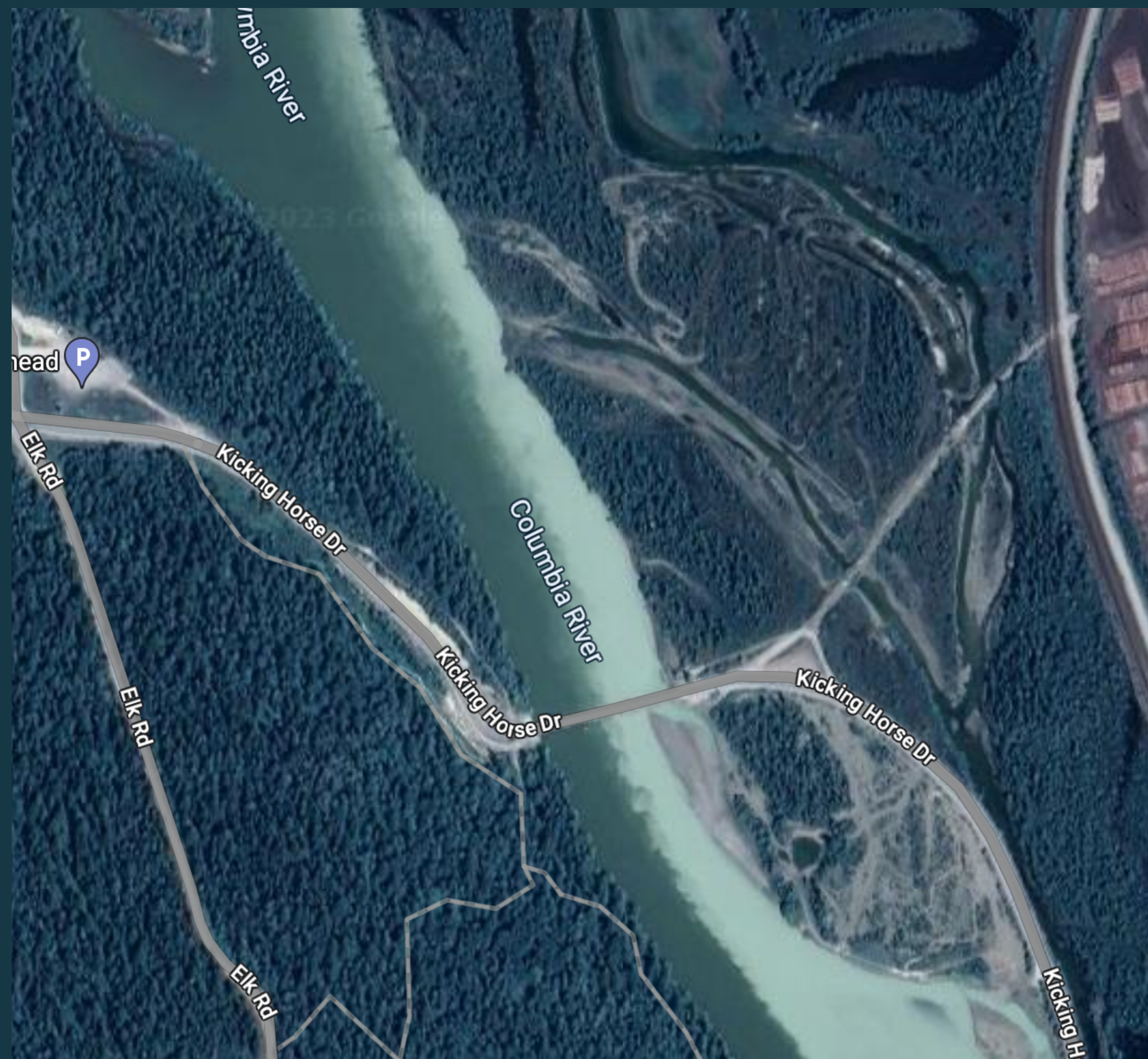
Drive time: **5 minutes**

### Benefits

- Trails exist
- Possible reclamation of dirtbike trails
- Nearby water
- Potential parking

### Constraints

- Area of environmental importance (orchids)
- Lacking desired forested area
- Distance from town



## Frenchman's Ridge

Distance from Golden centre: **8 km**

Walking time: **N/A**

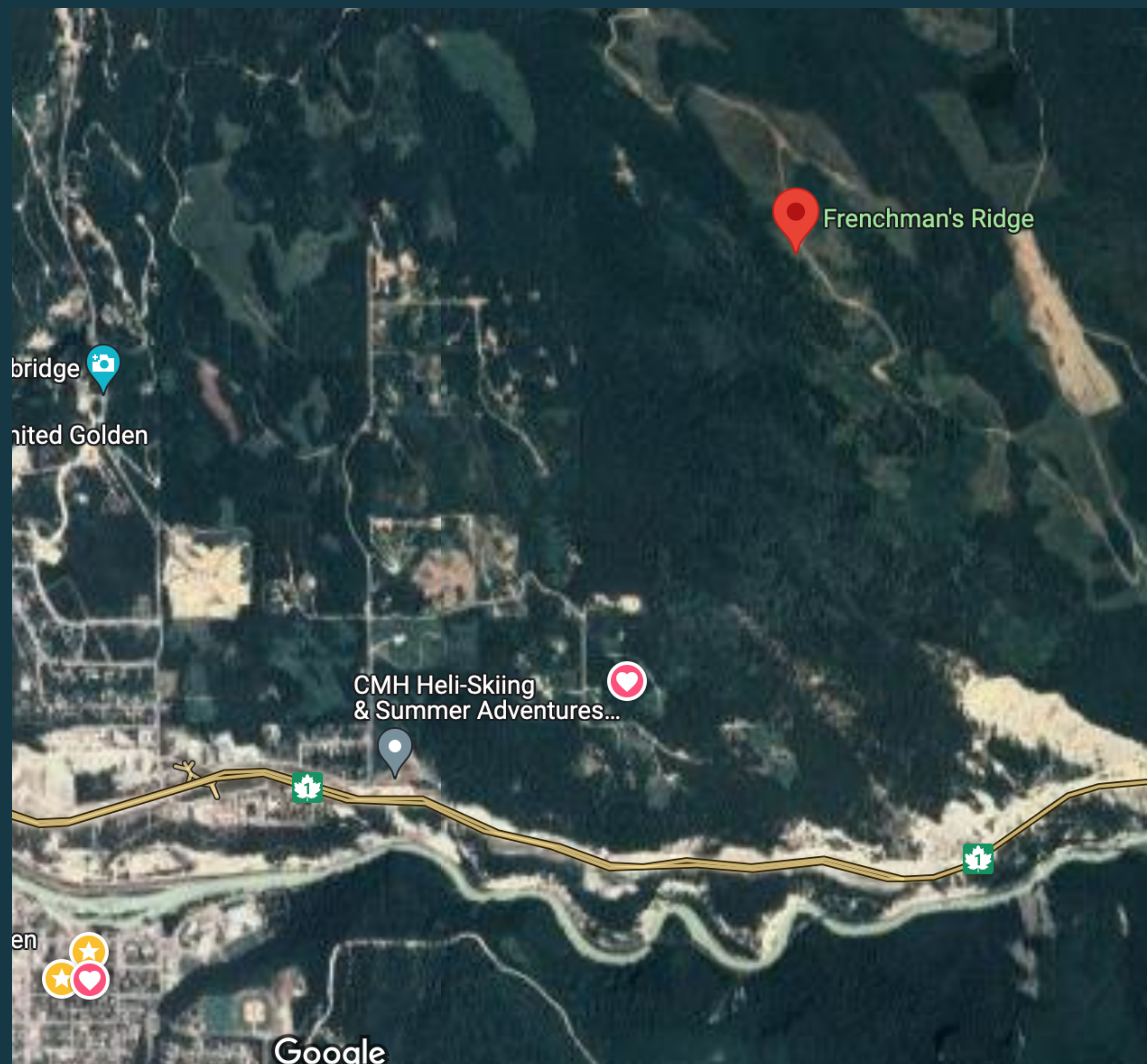
Drive time: **11 minutes**

### Benefits

- Trails exist

### Constraints

- Trails accessed through private land
- Impact to ungulate winter range
- Prescribed logging
- Elevation gain and loss
- Distance from town
- Limited parking



## Burgess Gadsen Provincial Park

Distance from Golden centre: **14.2 km**

Walking time: **N/A**

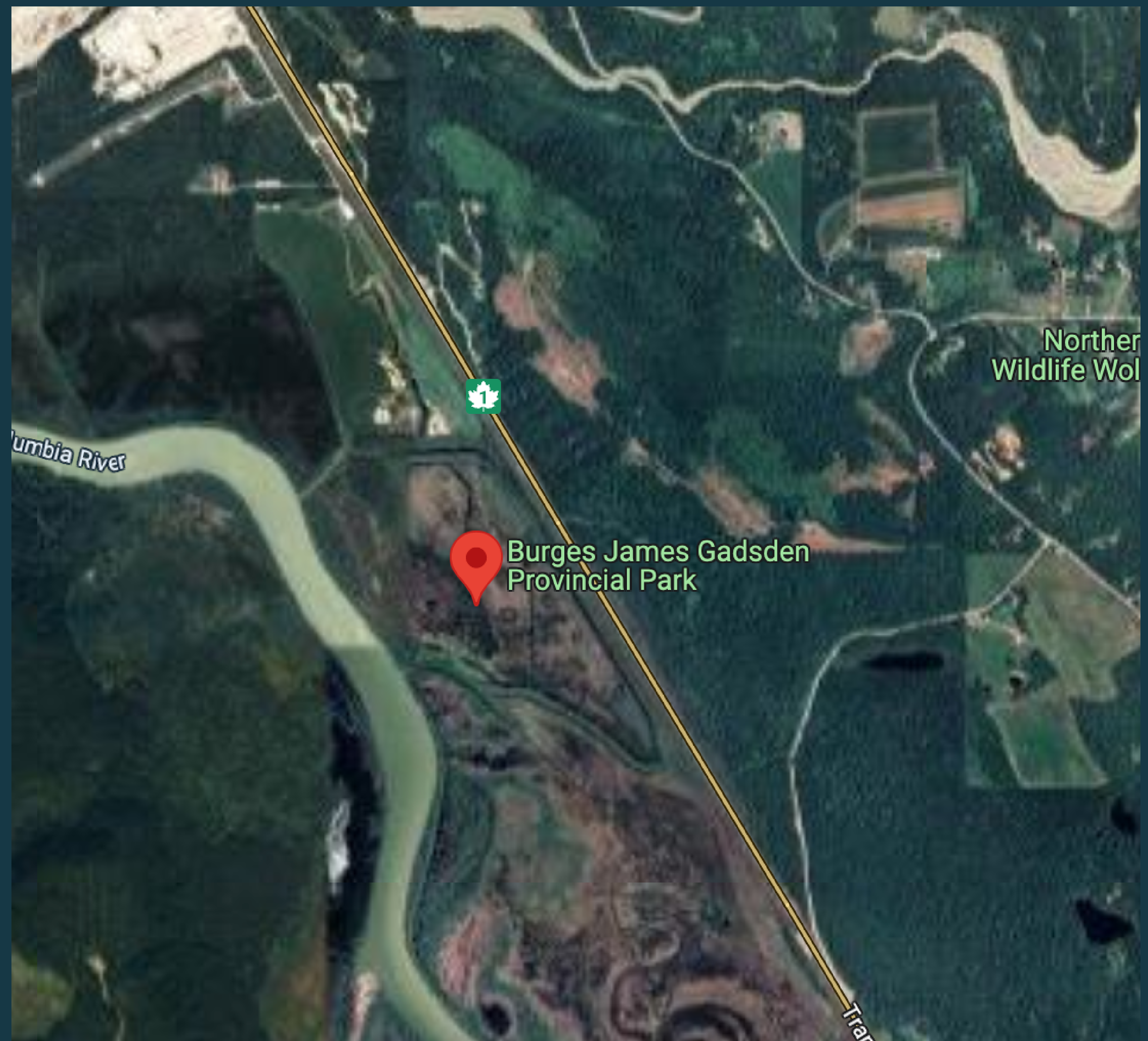
Drive time: **13 minutes**

### Benefits

- Trails exist
- Rod & Gun Club managed wood lot
- Nearby water
- Potential parking

### Constraints

- Limited parking
- Distance from town



# **Environmental considerations**

# Environmental considerations



The following is a list of anticipated environmental considerations for the project:

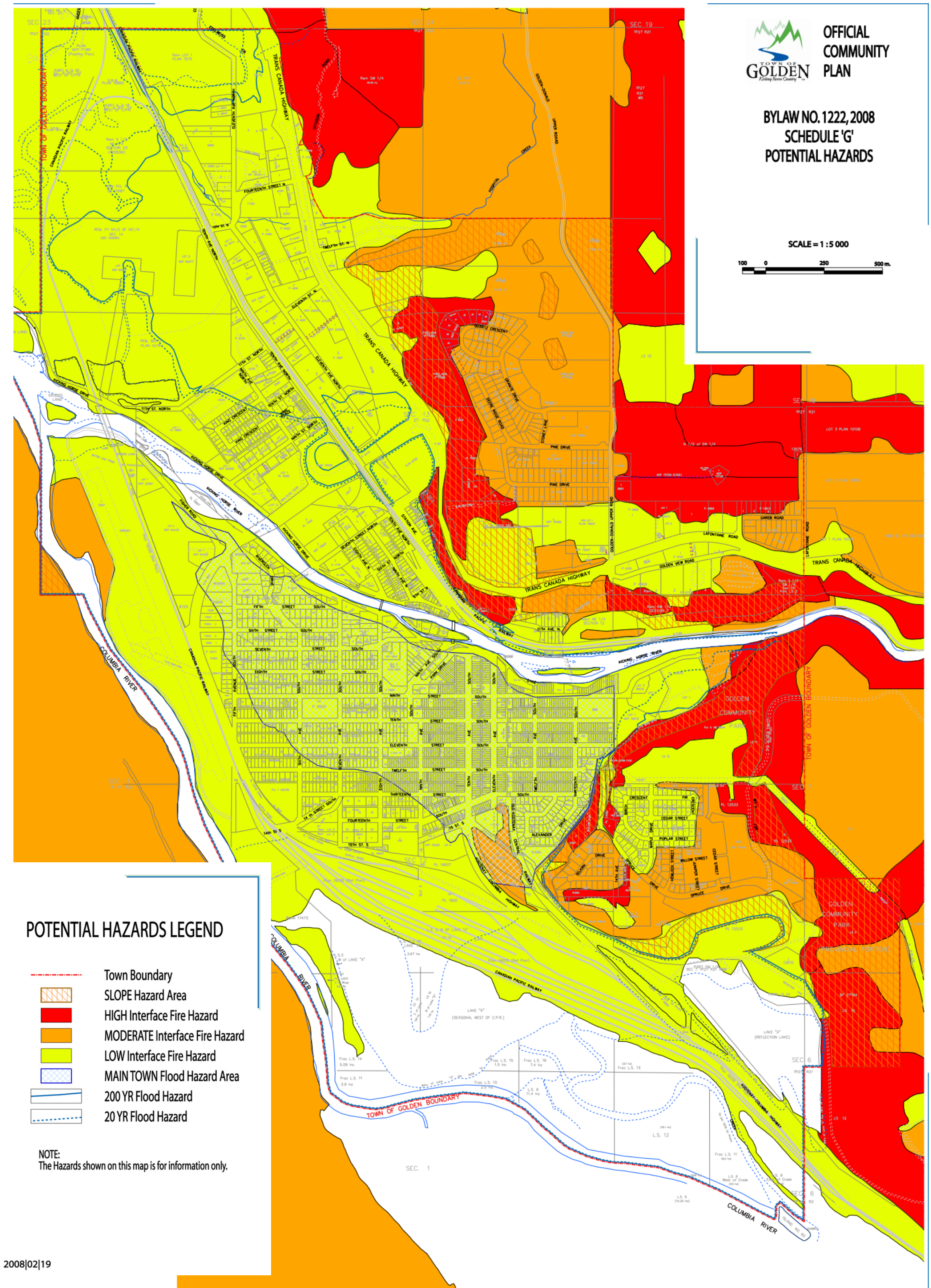
- Endangered species (Wildsight)
- Invasive species (East Kootenay Invasive Species Society)
- Degradation of soil, air and water quality
- Integrity of vegetation communities
- Direct disturbance of wildlife
- Resource extraction, eg. Logging/mining
- Herbicide/pesticide use
- Historical site use

See appendix for observed environmental impact assessment guidelines.

# Environmental hazards

## Hazard assessment of proposed sites:

- Fire
- Slopes
- Flooding





# Partners & providers

# Potential partners



A non-exhaustive list of potential partners to be considered:

**Golden & District Community Foundation**

**CSRD- Columbia Shuswap Regional District - Area A**

**CSRD- Columbia Shuswap Regional District**

**Columbia Basin Trust**

**East Kootenay Invasive Species Society**

**Invasive Species Council of BC**

**Local Food Matters**

**The Shuswap Trail Alliance**

**Fish and Wildlife Compensation Program**

**Trevor Hann, District Recreation Officer, Rocky Mountain North,  
RSTBC**

**Wildsight**

**Resort Development Strategy Advisory Committee:**

**CAO of the Town of Golden**

- **CAO of the Columbia Shuswap Regional District**
- **President of the Kicking Horse Country Chamber of Commerce**
- **Executive Director of Tourism Golden**
- **Operations Manager at Kicking Horse Mountain Resort**
- **Executive Director of Kicking Horse Culture**
- **Golden Campus Manager of College of the Rockies**

# Potential providers

A non-exhaustive list of potential build & design firms to be considered:

## **Build & design firms:**

Larch Landscape Architecture

Set in Stone Landscaping

Creeky Cedars Nursery



# Funding

# Funding



Funding could be predominantly sourced from Golden's resort municipality status, removing any onus on the town or tax payers to fund the project.

## Funding routes:

[Resort Municipality Funding](#)

[Destination Development Fund](#)

[Green Municipal Fund - Brownfields Sector Funding](#)

[Infrastructure Canada](#)

[Golden & District Community Foundation](#)

[Columbia Basin Trust](#)

[Columbia Valley Community Foundation](#)

[Rotary Club of Golden](#)

[TD Friends of the Environment Foundation](#)

[The Land Conservancy](#)

[PlanH Grant streams](#)

[Civic Info BC](#)

## Potential action items in the Official Community Plan to utilize for funding:

- Revitalization program bylaw and an associated tax exemption program in order to assist in the redevelopment of brownfield sites.
- Partnerships with the Federation of Canadian Municipalities in order to build capacity and provide access to grant funding.
- Incentives for the development of vacant land.

Further research into funding is required once the revised concept is reviewed and approved for further scope.

# Phase 2

# Next steps

With completion of this research document, we'll be sharing our findings with our two key stakeholder parties, and scheduling a presentation to Golden Town Council.

- **Share with Wildsight Regional**
- **Share with Golden & District Community Foundation**
- **Post to Golden Wildsight website**
- **Present to Golden Town Council**
- **Share with Town of Golden**

## Phase 2

**During phase 1, the initial concept has been heavily revised. This calls for further investigation into the viability of a garden model for the Town of Golden.**

Phase 2 is proposed to be paused until a review of the revised concept can take place and if viability is confirmed, any further research be conducted before commencing an implementation phase.



# **Glossary & references**