



WILDSIGHT GOLDEN

ANNUAL
REPORT

2024/25



ANNUAL GENERAL MEETING MARCH 4, 2025

AGENDA:

1. PINGO
2. Call to order
3. Welcome and introductions
4. Motion to approve 2025 agenda
5. Motion to approve minutes of March 13/2024 AGM
6. Treasurer's Report
7. Annual Report
 - a. Outreach and Events
 - b. Projects & Programs
 - c. Committees
8. Member feedback, questions, and discussion
9. Election of Board of Directors
10. Purple air door prizes



LAND ACKNOWLEDGEMENT

~ ANCESTRAL TERRITORY OF THE KTUNAXA PEOPLE

~ SHARED WITH THE SECWEPENC PEOPLE

~ HOME TO THE MÉTIS NATION COLUMBIA RIVER SOCIETY.

WELCOME AND INTRODUCTIONS

Branch Manager: Monica Taylor

2023/24 Board of Directors:

Joan Dolinsky, Meg Langley, Aita Bezzola, Mathew Zaleski, Christian Schlumpf, Greg Galloway, Jordan Wilke, Laura Hill

2023/24 Contractors:

Aita Bezzola, Rachel Darvill, Meg Langley, Annette Lutterman, Gemma Cobb, Verena Shaw

2024 MINUTES (MARCH 13)

Present:

Joan Dolinsky, Jordan Wilkie, Aita Bezzola, Jennifer Greenwood, Natalie Ebsworth, Tony Bellward, Jane Bellward, Mylene Gosselin, Joy Guyot, Misty St. Peter, Evangelia Tarasoff, Calvin Beauchesne, Hanna Sander-Green, Mathew Zaleski, Rachel Darvill, Elliot Darvill-Jenkins, Laura Hill, Isobel Freeman, Britany Newman, Sandy Corbet, Leslie Adams (all members)

- Call to Order at 7:09pm.
- Land acknowledgement. Welcome and introductions.
- Motions to approve 2024 Agenda and 2023 minutes, moved and seconded, passed unanimously.
- Motion to approve Treasurer's report as presented, moved and seconded, passed unanimously.
- Annual Report presented. Member feedback, questions, and discussion.
- Election of Board of Directors – conducted by Branch Manager, rules of order explained.
- Continuing and new candidates nominated and seconded, no objections.
- Nominations asked from the floor. No other nominations, nominations closed.
- Motion moved and seconded to adopt 2024.25 Board of Directors as follows: Joan Dolinsky, Aita Bezzola, Calvin Beauchesne, Mathew Zaleski, Natalie Ebsworth, Christian Schlumpf, Jordan Wilkie, Laura Hill, Misty St. Peters, Greg Galloway. 10 so no election needed. Moved by Brittany Newman, seconded by Rachel Darvill, no objections.
- Door prizes awarded.
- Meeting adjourned, no objections.

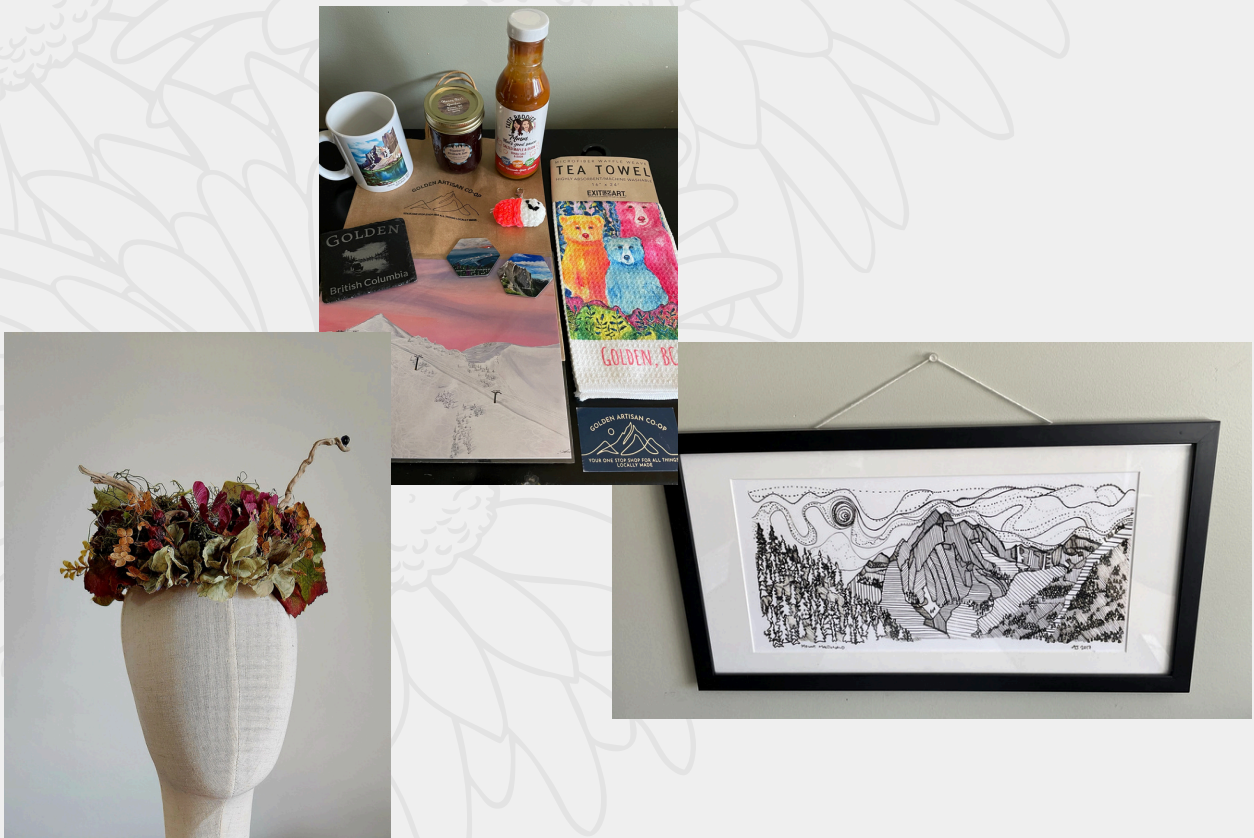
TREASURER'S REPORT - PROFIT AND LOSS

See appendices attached at the end of report.

FUNDRAISING

2nd Annual Online Auction Fundraiser - October

- Raised \$3120! Huge THANK YOU for the generous support of donations from local businesses and artists.
- Facebook posts throughout the duration of the silent auction, showcasing items up for bidding and highlighting our donors.



COMMUNITY OUTREACH AND EVENTS

2ND ANNUAL GOLDEN BEAR FEST – SEPTEMBER

- Bear spray demos from WildSafeBC
- Indigenous knowledge keeper Marcel told stories and showed his wildlife viewing cards in action
- Bear guide Sarah took us on a nature walk around the park to look at bear markings on the trees and scat.
- Thanks to Town of Golden and CSRD for the funding.
- Glean Golden apple giveaway
- FireSmart and their truck
- Story walk by our local Library
- Miss Kitty's face painting
- BBQ from the Rotary club
- Poop on scoop activity



INTERNATIONAL MIGRATORY BIRD DAY - MAY

One of our favourite events of the year, eating pancakes together and going on a very enlightening bird walk with biologist Rachel Darvill.



FUNGI THROUGH THE LENS OF MACROPHOTOGRAPHY - NOVEMBER

Naturalist Bryan Kelly-McArthur introduced us to the fascinating world of Fungi, through a series of his incredibly detailed photographs. Hosted at our local Library branch.

CREAKY CEDARS NATIVE GARDEN TOUR - JUNE

SUSTAINABILITY CLOTHING SWAP - DECEMBER

Co-hosted with Climate Champion Mo King, lots of winter layers exchanged and donated to the Women's Resource Centre and Bargain Basement.

GET WILD! SUMMER CAMP



GET WILD'S MISSION:

“To inspire youth to connect with our community and nature through fun inclusive outdoor activities”

Coordinators: Steph and Reid

96 kids over 8 weeks, 9am - 3pm each day.

ACTIVITIES

- Rocky Mountain Buffalo Ranch
- Outdoor Rock Climbing with Dirtbag
- Golden Skybridge
- Northern Lights Wolf Sanctuary
- Mini Golf & Bowling
- Glacier Rafting
- Boo the Bear Refuge & KH Gondola
- Emerald Lake and Field
- Confluence Park & Reflection Lake
- Golden Museum
- Golden outdoor pool
- Walk of the Wetlands
- Guests: Joan Dolinsky, Ashley Lang & Shelly Macgregor



AIR QUALITY



- Golden has some of the worst AQ in BC!!
- Continuation of the Community Wood Smoke Reduction Program, funded by the BC Lung Foundation.
- Rebates given out to residents for heat pumps and upgraded wood stoves.
- Farmers Market tabling over the summer.
- Social media posts, e-blast articles and press releases, sharing AQ data and pointers for action.
- Released a video on local air quality issues
- Moisture meters given out to people who showed interest in using them via a facebook post on clean burning tips.
- Committee meetings and reports to RAPP about open burnings on low venting index days.
- Monica took over from Calvin in November, with funding from the CSRD to work on public education.
- Worked to increase number of PurpleAir sensors in town.
- Door-to-door surveying residents about local AQ concerns and sharing info on rebates for cleaner heating options.



EV CAR SHARE PROGRAM - ON HOLD



- Wildsight Golden took over running the EV in August.
- An affordable and more eco-friendly transport option for the community and it's visitors.
- Marketed widely around town through posters, social media posts, press releases, e-blasts and tabling at the summer Farmers Markets.
- Lots of interest and new registrations since August.



Due to a recent mechanical failing and limitations of 24/7 staff capacity, this program is on hold until another organisation/individual is found to take it over. We are in discussion with the Town of Golden, Kootenay Carshare Cooperative and Wildsight Invermere to find a solution. The best outcome is that the carshare continues to exist in Golden as it has proved to be a beneficial resource for the community.

ENVIRONMENTAL EDUCATION

Plant Awareness Project

Have you learned all 23 plants yet?

Golden schools have all embraced this project and more and more teachers are incorporating this infrastructure into their lessons. PINGO (Plant Bingo) is gaining popularity and helps teach Indigenous and French plant names.

Learn about plant uses from the individual plant signs on posts and fencing along the rotary trail and visit the webpage for a guided tour, coloring pages and more.

www.wildsight/plantawareness

PLANT AWARENESS PROJECT

WELCOME TO THE WONDERFUL WORLD OF PLANTS!

Thank you for your interest in learning about local plants. These wonderful beings produce oxygen and carbohydrates as they process the sun's energy. Look for the 23 unique signs along the Rotary Trail, placed on a post or fence, near a live specimen of the plant. Each sign includes a photo, information, a leaf outline and original art created by a local artist. Feel free to trace the outlines to help learn to recognize the plant or to make an art piece. Enjoy!

 The plants in the photos have been named in the seven languages listed below.	 Naloxonia Au miel Blaux an moutay ouaki Kaniwawachegon Spiraea à feuilles de Saules Spiraea Spiraea betulifolia	 Nalokum Miel Nageur à miel et citron à bees Au chowen Peuplier de laurier Black Cottonwood Populus balsamifera	 KATKA Shri-muni Elm fleur Shou-karou Clématide bleue Blue Clematis Clematis occidentalis	 Kaniwawachegon Kaniwawachegon Li heron vert Chrysomela Agropyron à crête Crested Wheat Grass Agropyron cristatum	 Mikak Li waban Douglas et jarabab Fritillaria Erable nain Douglas Maple Acer glabrum
 Eti Tawilp Douglas sans saut Popule Saipin de Douglas Douglas fir Pseudotsuga menziesii	 Kaniwawachegon Kaniwawachegon Kaniwawachegon à plante Ode à la fleur de saule Arrière à feuilles courtes Herb saule Arrière Arisaema	 Kaniwawachegon Eti Kaniwawachegon Kaniwawachegon Roseau d'eau Kaniwawachegon Anemone	 Kaniwawachegon Ode à la fleur de saule Ode à la fleur de saule Ode à la fleur de saule Ode à la fleur de saule Ode à la fleur de saule	 Kaniwawachegon Li heron vert Tawilp Li heron Ode à la fleur de saule Bouleau à papier Paper Birch Betula papyrifera	 Kaniwawachegon Li heron vert Tawilp Li heron Ode à la fleur de saule Bouleau à papier Paper Birch Betula papyrifera
 Mikak Tawilp Douglas sans saut Popule Saipin de Douglas Douglas fir Pseudotsuga menziesii	 Naloxonia Stakila Stakila Kaniwawachegon Kaniwawachegon Cornouille Cornouille Cornouille Cornouille	 Nalokum Li heron Li heron Li heron Li heron Li heron Li heron	 Nalokum Li heron Li heron Li heron Li heron Li heron Li heron	 Nalokum Li heron Li heron Li heron Li heron Li heron Li heron	 Nalokum Li heron Li heron Li heron Li heron Li heron Li heron
 Nalokum Li heron Li heron Li heron Li heron Li heron Li heron	 Nalokum Li heron Li heron Li heron Li heron Li heron Li heron	 Nalokum Li heron Li heron Li heron Li heron Li heron Li heron	 Nalokum Li heron Li heron Li heron Li heron Li heron Li heron	 Nalokum Li heron Li heron Li heron Li heron Li heron Li heron	 Nalokum Li heron Li heron Li heron Li heron Li heron Li heron

Learn more about this project and the 23 plants highlighted along with additional resources and connections at: www.wildsight.ca/plantawareness



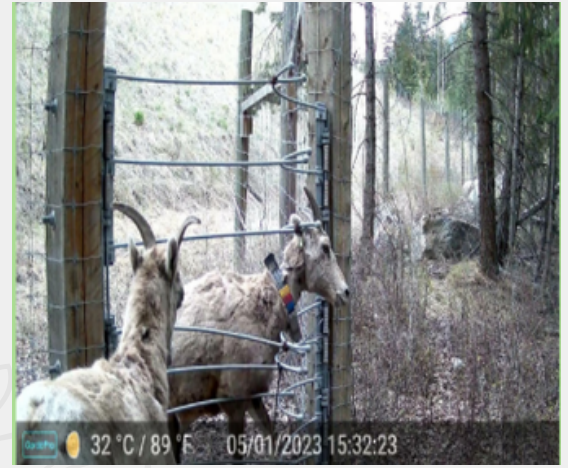
Upgrading Reflection Lake Wildlife Viewing Gazebo

- Fixed the ramp for better wheelchair access
- Repainted the benches
- This summer we will hopefully update the interpretive signs
- Thank you to volunteers Jerry, Christian, and Joan
- Thank you to the Town of Golden for financial and staff support

ROCKY MOUNTAIN BIGHORN SHEEP PROJECT

How do wildlife in the Kicking Horse Canyon use exit structures?

- Exit structures are designed to let animals that are accidentally in the highway right of way leave the area. BC has both gates and jump-outs but do they work?
- Few studies exist.
- We used remote cameras to collect images for 5 years at 9 exit structures.
- When processed we will be able to answer various questions including the following:
 - What percentage of escaping animals actually escape?
 - How much time do deer and bighorn sheep spend at escape structures?
 - How often do bighorn sheep successfully breach the structures.



How do Bighorn sheep solve the complex task of breaching exit structures?

Bighorn sheep are unique in their ability to open gates from the back and in learning to jump-up at jump outs. How do they do this?

Still images and video footage from below and above exit structures will allow us to answer many questions including the following:

- What sex and age of bighorn sheep are most successful at breaching the escape structures?
- What techniques to males versus females use to breach gates and jump-outs?
- Do individual differences exist in ability to breach gates and jump-outs?
- How long to animals spend at exit structures and what do they do during this time?



Do stress hormones increase with pregnancy in bighorn sheep?

- We collected feces for 5 years during February and March and had them analyzed at the Toronto Zoo for Cortisol (stress hormone) and pregnane (indicates pregnancy).
- We will publish the results looking at the relationship between these two hormones.

Do you think pregnancy is stressful???

FORESTRY

- Developing priorities for old growth
- Actions to draw attention and protection to interior temperate rainforest (ITR) north of Golden
- Referral responses to PWT and Canfor
- Supporting and engaging with Parson residents concerned about impacts of salvage logging in the burn.



Timber Supply Review (TSR) for the Golden Timber Supply Area (TSA)

- A new timber supply analysis and review will soon start for Golden
- The analysis eventually results in BC chief forester setting the Annual Allowable Cut (AAC) for our area
 - Too high AAC forces local logging companies to be aggressive.
 - Too low AAC reduces profit
 - Analysis done by computer models
 - At various stages the public is consulted
 - Forestry committee aims to help community prepare!
- Run several public education events about the problems/process starting March 14, 2025.



Fall Mycoblitz

5 WSG members collected specimens for Intercontinental Mycoblitz to start to ID some fungi in local ITR forest. Processed 10 specimens that were mailed for lab ID.

WEST BENCH RECREATION STUDY

Conservation of Wildlife Habitat in the Context of Increasing Human Land Use and Climate Change in the Golden Area

- Collaboration with Gemma Cobb PhD candidate at Griffiths University, Australia
- Public engagement, analysis of existing wildlife habitat data, mapping landscape values
- Preliminary results from 2024 community survey on perspectives of impacts on wildlife and landscapes →
- 150 total responses from the community.
- Now seeking participants for an online mapping exercise to delve into landscape values in the Golden area. This research aims to build a better understanding of how local overlapping land use decisions may influence the maintenance of a healthy environment for humans, ecosystems, and wildlife.
- Survey can be found [here](#).

PERSPECTIVES OF IMPACTS ON WILDLIFE & LANDSCAPES

SURVEY RESULTS

150 total responses from the community

18-80

AGE OF PARTICIPANTS SURVEYED

68.7%

IDENTIFIED AS WOMEN

31.3%

HAVE LIVED IN AREA OVER 20 YEARS

82%

HIKING MOST POPULAR ACTIVITY

51.3%

MEMBERS OF RECREATION CLUBS

WE ASKED: Are there any a) wildlife or b) geographic attributes you think have experienced more change?

a)

- 24.7% - Wolverine
- 38% - Grizzly bear
- 2.7% - Big Horn sheep
- 40.7% - Mountain goat
- 35.3% - Caribou
- 3.3% - Moose
- 3.3% - Black bear
- 8% - Elk
- 6.7% - Deer
- 2% - Swallows
- 3.3% - Birds (gen.)
- 20% - Beaver
- 38.7% - Salmon

b)

- Glacier - 1.3%
- Alpine meadows - 34.7%
- Exposed rock alpine - 16.7%
- Alpine & high elevation wetlands - 32%
- Old growth forest - 51.3%
- Mid-low elevation forests - 2.7%
- Low elevation/valley bottom wetlands - 2%
- Rivers & streams - 56.7%

WE ASKED: What human activities you think could have a negative effect on wildlife or the habitat and ecosystems they rely on?

- LOGGING & DEFORESTATION (18%)**
- OFF-ROADING & MOTORIZED RECREATION (18%)**
- URBANIZATION & DEVELOPMENT (13%)**

WE ASKED: What are your top priorities and goals you would like to see addressed in the area in relation to the environment?

- 1 PRESERVING BIODIVERSITY & ECOSYSTEMS**
- 2 MAINTAINING WILDLIFE CORRIDORS**
- 3 PREPARING COMMUNITIES FOR CLIMATE CHANGE IMPACTS**

76.9%

DON'T KNOW IF THERE ARE PROCESSES TO RESOLVE CONFLICTS ON THE LANDSCAPE

33%

OF PARTICIPANTS EXPRESSED FEELINGS OF ANXIETY OR DEPRESSION WHEN IT COMES TO FUTURE CLIMATE CHANGE

62.7%

MAKE DECISIONS ABOUT WHERE TO GO AND NOT GO ON THE LANDSCAPE FROM WORD OF MOUTH

THANK YOU TO ALL THE PARTICIPANTS FOR THEIR TIME!
IF YOU HAVE ANY QUESTIONS PLEASE EMAIL GEMMA.COBB@GRIFFITHUNI.EDU.AU

Griffith UNIVERSITY

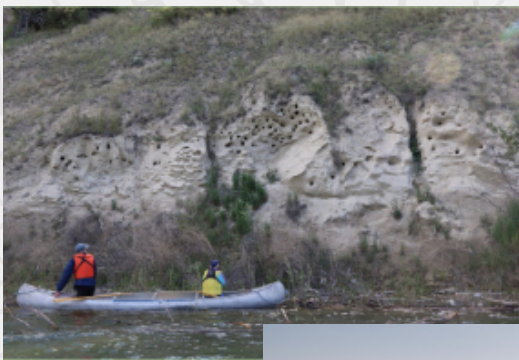
UPPER COLUMBIA SWALLOW HABITAT ENHANCEMENT PROJECT

(2021-2026)

Swallows are important to conserve (e.g. ES's, intrinsic, bring sense of well-being). Bank and Barn Swallows (aerial insectivores) have been facing significant population declines (98% and 76% respectively).

Major goals:

- Identify important breeding locations for bank and barn swallows.
- Provide volunteer opportunities.
- Enhance Barn and Bank Swallow habitat.
- Outreach and awareness, include Indigenous knowledge on swallows.
- Assist with providing unprecedented information on the timing and locations of Bank Swallow movements using Motus.

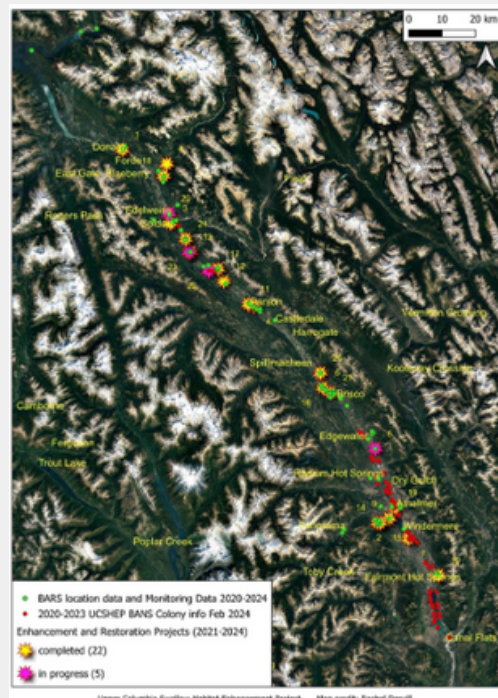


UPPER COLUMBIA SWALLOW HABITAT ENHANCEMENT PROJECT (2021-2026)

Enhancement Projects and Location of Nest Sites

Enhancements:

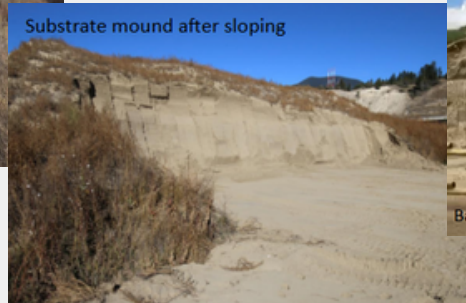
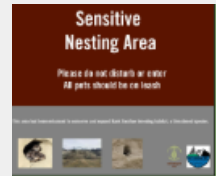
- 102 nest cups installed (ANS and pre-existing structures)
- Vegetation removal at 1 BANS colony
- Restoration work at Wind Lk PP with BC Parks and with TNTBC in Edgewater.
- 7 BARS artificial nest structures created
- BANS habitat creation at Birchlands Creek (20km S of Golden).
- Parson Air B&B – innovative structure providing bat and swallow habitat.
- 154 volunteers



Barn Swallows - Nests on 127 structures at 64 locations.
Bank Swallows - 128 colonies

UPPER COLUMBIA SWALLOW HABITAT ENHANCEMENT PROJECT (2021-2026)

Athalmer Bank Swallow habitat enhancement project



Moberly Marsh Bank Swallow habitat creation project



UPPER COLUMBIA SWALLOW HABITAT ENHANCEMENT PROJECT (2021-2026)

Recommendations for Next Steps

- Continue to develop and grow collaborations with Shuswap and ʔakisq̓nuk communities for swallow conservation.
- Effectiveness monitoring at all enhancement sites.

Huge thank you to Verena Shaw, program assistant.

Wildsight Golden graciously acknowledges the financial support of the following:



Thank you to the generous contributions of volunteers and landowners, and the following organizations/governments:



Environment and
Climate Change Canada
Canadian Wildlife Service

Environnement et
Changement climatique Canada
Service canadien de la faune



COMMUNITY INVASIVE PLANT PROGRAM SEASON 15!

Coordinated by Ashley Lang and developed and managed by Rachel Darvill.

Strategies:

- Mechanical (non-toxic) removal
- of invasive plants
- Restoration with native revegetation
- Outreach and advice about IP's and best practices for removing them.
- 21 Priority sites in 2024



- 2,708 bags of invasive plants have been removed since 2010! (Not including stems/non-seedy plants left on the ground).
- Native grass seed planted in restoration areas.
- Tarps to smother aggressive invasives.
- Community Weed Pull events, two in 2024.
- Wildsight Golden's GET WILD! Kids Day.
- Landowner outreach.
- Golden Farmers Markets
- Job posting for 2025 coordinator this March!

Thank you Town of Golden for financial support!



MANY THANKS TO
WILDSIGHT GOLDEN'S
FINANCIAL SUPPORTERS:

(Aside from the funders mentioned previously,
specific to Rachel's programs)

- Province of British Columbia Gaming
- Wildsight Regional
- BC Lung Association
- Columbia Shuswap Regional District
- Columbia Basin Trust
- Town of Golden
- Golden & District Community Foundation
- Yellowstone to Yukon
- Columbia Valley Credit Union



MEMBER FEEDBACK & GRATITUDE

Monica Taylor - Branch Manager

Departing BOD members: Jordan Wilkie, Laura Hill, Greg Galloway

Special thanks to ALL volunteers and supporters of Wildsight Golden.
We could not do what we do without YOU!

2025.26 BOARD OF DIRECTORS

Remaining:

- Meg Langley
- Aita Bezzola
- Joan Dolinsky
- Mathew Zaleski
- Christian Schumpf

New:

- David Geselbracht
- Kellie Sych
- Else Bosman
- Bastian Lye

Statement of Financial Position

Wildsight Golden

As of January 31, 2025

DISTRIBUTION ACCOUNT	TOTAL
Assets	
Current Assets	
Cash and Cash Equivalent	
Cash Clearing Class A Shares	-200.09
Class D Shares CVCU - Gaming	2.50
Account Restricted CVCU - Org 101	8.33
CVCU - Savings Petty Cash Rebate	37,070.13
Undeposited Funds	15,866.56
	135,934.74
	285.70
	2,100.00
Total for Cash and Cash Equivalent	\$191,067.87
Accounts Receivable (A/R)	
Accounts Receivable (A/R)	632.02
Total for Accounts Receivable (A/R)	\$632.02
Total for Current Assets	\$191,699.89
Non-current Assets	
Property, plant and equipment	
Total for Non-current Assets	0
Total for Assets	\$191,699.89
Liabilities and Equity	
Liabilities	
Current Liabilities	
Accounts Payable (A/P)	
Accounts Payable	1,617.71
Employees' Income Tax Payable	
Total for Accounts Payable (A/P)	\$1,617.71
Credit Card	
Deferred Income	146,697.51
GST/HST Payable	-4,183.85
GST/HST Suspense	
Payroll Liabilities	0
British Columbia WSIB	7.71
Federal Taxes	1,763.84
Vacation Pay	1,255.45
Total for Payroll Liabilities	\$3,027.00
Total for Current Liabilities	\$147,158.37
Non-current Liabilities	
Total for Liabilities	\$147,158.37
Equity	
Retained Earnings	41,221.32
Profit for the year	3,320.20
Funds Balance	
Opening Balance Equity	
Total for Equity	\$44,541.52
Total for Liabilities and Equity	\$191,699.89

Statement of Activity
Wildsight Golden
February 1, 2024-January 31, 2025

DISTRIBUTION ACCOUNT	TOTAL
Income	
Admin BC Lung Association	33,609.93
Donations Ducks UC Funds - BC	6,308.75
Parks Funds - Columbia Basin	583.90
Trust Funds - CSRD Funds -	6,000.00
CVLCF Funds - FWCP Funds -	4,449.89
Nature Trust of BC Funds -	107,876.36
Province of BC - Gaming Funds -	9,767.31
Town of Golden Funds -	3,250.00
Wildsight Regional Funds -	25,842.91
Yellowstone to Yukon Interest	5,000.00
Program Fees Services Wildlife	37,800.00
Conservation Society	9,198.18
	2,169.42
	23.65
	441.12
	27,104.23
	9,133.48
	2,500.00
	\$291,059.13
Total for Income	
<hr/>	
Cost of Goods Sold	
Gross Profit	\$291,059.13
<hr/>	
Expenses	
Advertising & Promotion	2,639.23
Bad Debt Expense	29.00
Bank Charges & Interest	28.13
Bookkeeping	2,674.68
Business, Licences & Dues	87.27
Contracts	8,208.00
Contracts & Honoraria	96,339.13
Delivery, Freight & Postage	23.05
Get Wild Summer Camp - Refunds	510.00
Insurance Expense	2,132.00
Membership expense	20.00
Mileage	6,406.48
Office Expense	195.49
Payroll Expenses	0
	4,179.74
Taxes	57,122.83
Wages	\$61,302.57
<hr/>	
Total for Payroll Expenses	249.87
Printing & Photocopying	68,816.94
Program Supplies	375.00
Reimbursements	1,280.00
Rent - Facilities	5,311.00
Rent - Office	

Statement of Activity
Wildsight Golden
February 1, 2024-January 31, 2025

DISTRIBUTION ACCOUNT	TOTAL
Telephone Expense	355.33
To S.A.	24,555.38
Travel & Training	4,674.47
Utilities Expense	1,149.86
Volunteer Appreciation	283.82
WSBC	92.23
Total for Expenses	\$287,738.93
Other Income	
Other Expenses	
Adjustments	
Total for Other Expenses	0
Profit	\$3,320.20